

**THANK YOU FOR USING TIECHENG
BRUSHLESS PROFESSIONAL GRADE POWER TOOLS!**

TC·BL
Tiecheng Brushless

**BRUSHLESS AIR COMPRESSOR
AC&DC DUAL-PURPOSE**

Manual book



TC·BL
Tiecheng Brushless

Zhejiang Tichop Tools Co.,Ltd

Add: Huacheng West Road 337,West City New Area,
Yongkang City Zhejiang Province,China.

Tel: 0086-579-87713236 Fax: 0086-579-87713056

DC2090/DC5090M/DC990AD-10L

Safety instruction

To avoid fire,hurt body,electric shock and other accidents,Pls read and follow the safe instruction before using it.

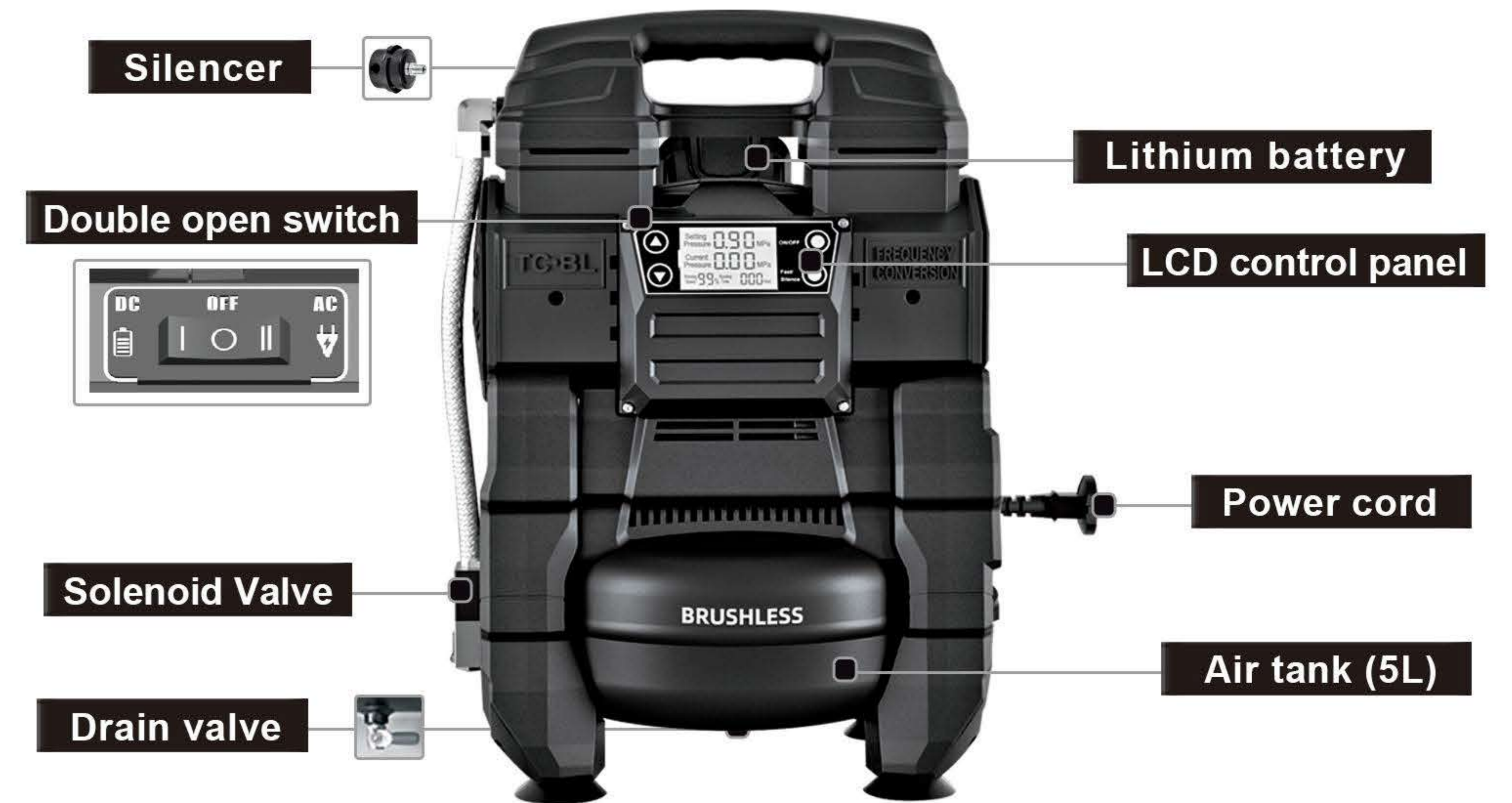
- 1.Keep the work place clean.
- 2.Do not put the machine in wet or harsh condition place(dusty or full of explosive gas)
- 3.Electric shock: Do not touch the grounded objects.For example the conduit pipe,heating pipe,etc.
- 4.Kids and unrelated people do not close to the machine when its working.
- 5.Taking care of the machine when you don't use it. Pls release the air and dust water from tank and put it in the dry place.
- 6.Pls follow the rating volt,speed.
- 7.Protection of cable:don't tighten the power cable and keep distance of hot resource and oil.
- 8.Maintance:clean the filter,check the cable and accessories.If not good,pls exchange it.
- 9.Pls turn off power source and the switch of the air compressor.When you not use it.
- 10.Avoid over-pressure setting:The maximum pressure is 0.9 MPa.
- 11.Warning:Pls use our factory's parts for repair.
- 12.Power volt:Pls check the volt,Such as 180V-250V,if Not right,The machine will be damaged by abnormal volt.
- 13.The compressor is only for the air pressurize,not for other gas,dust or explosive material.
- 14.Don't use forced flammable and combustibile air and liquid.
- 15.Don't torch the hot parts of compressor.Such as the Cover of motor,Echaust pipe.etc.
- 16.The cable section is not less than.2 square mm and not need too long.
- 17.It is forbidden to crash.Pls put it suitable position when you work it.

Main Parameter

Modle	Pressure	Flow	Power	Air tank	Voltage	N.W.
DC2090	0.1-0.9Mpa	65L/min	550W	5L	DC18V/ AC220V	10.5KG
DC5090M	0.1-0.9Mpa	65L/min	550W	0L	DC12-30V /AC100V	8.5KG
DC990-10L	0.3-0.9Mpa	130L/min	1100W	10L	DC18V+18V /AC220V	16.5KG

Compressor Features

DC2090



DC5090M



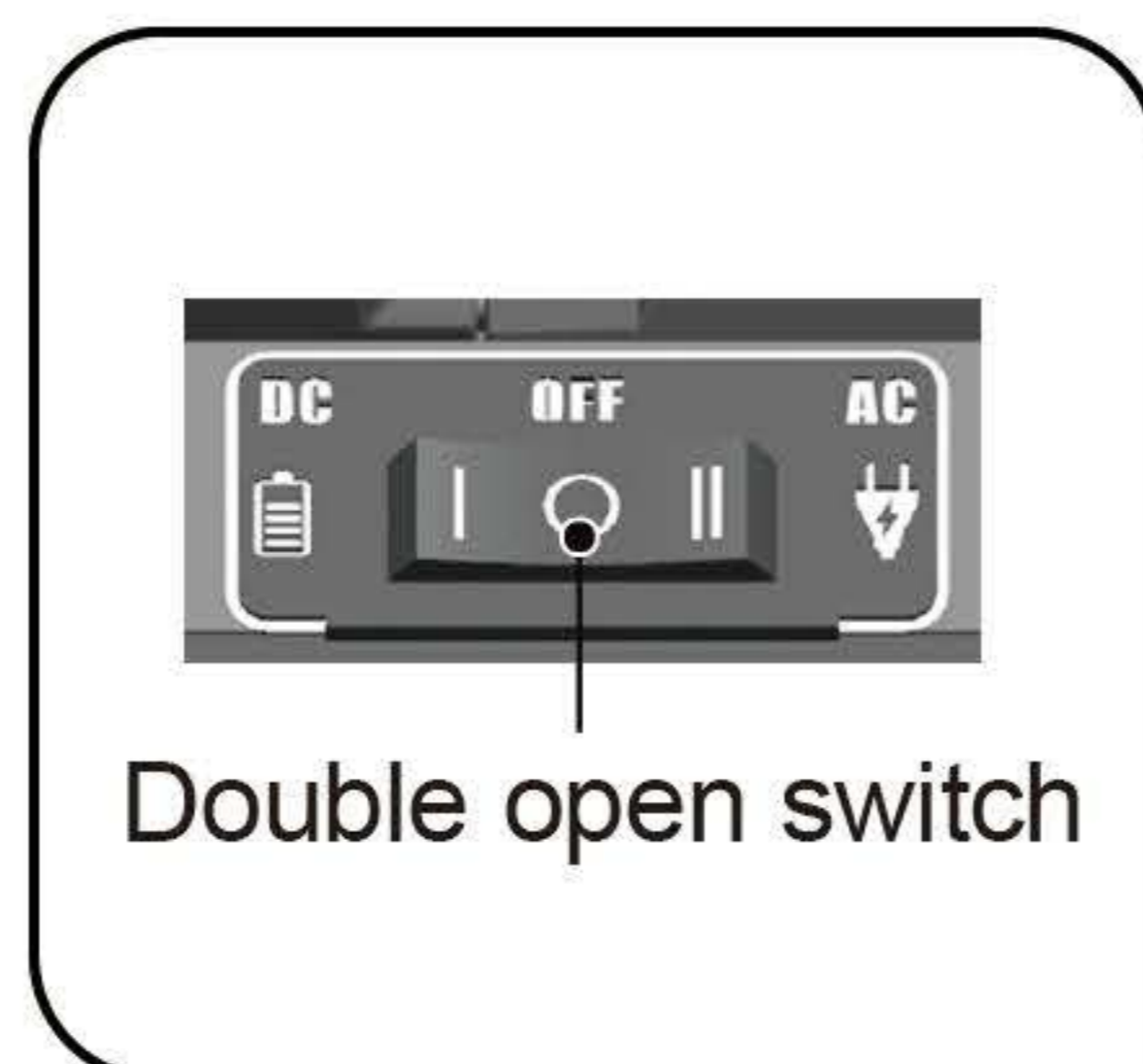
DC990AD-10L



AC/DC power supply shifting

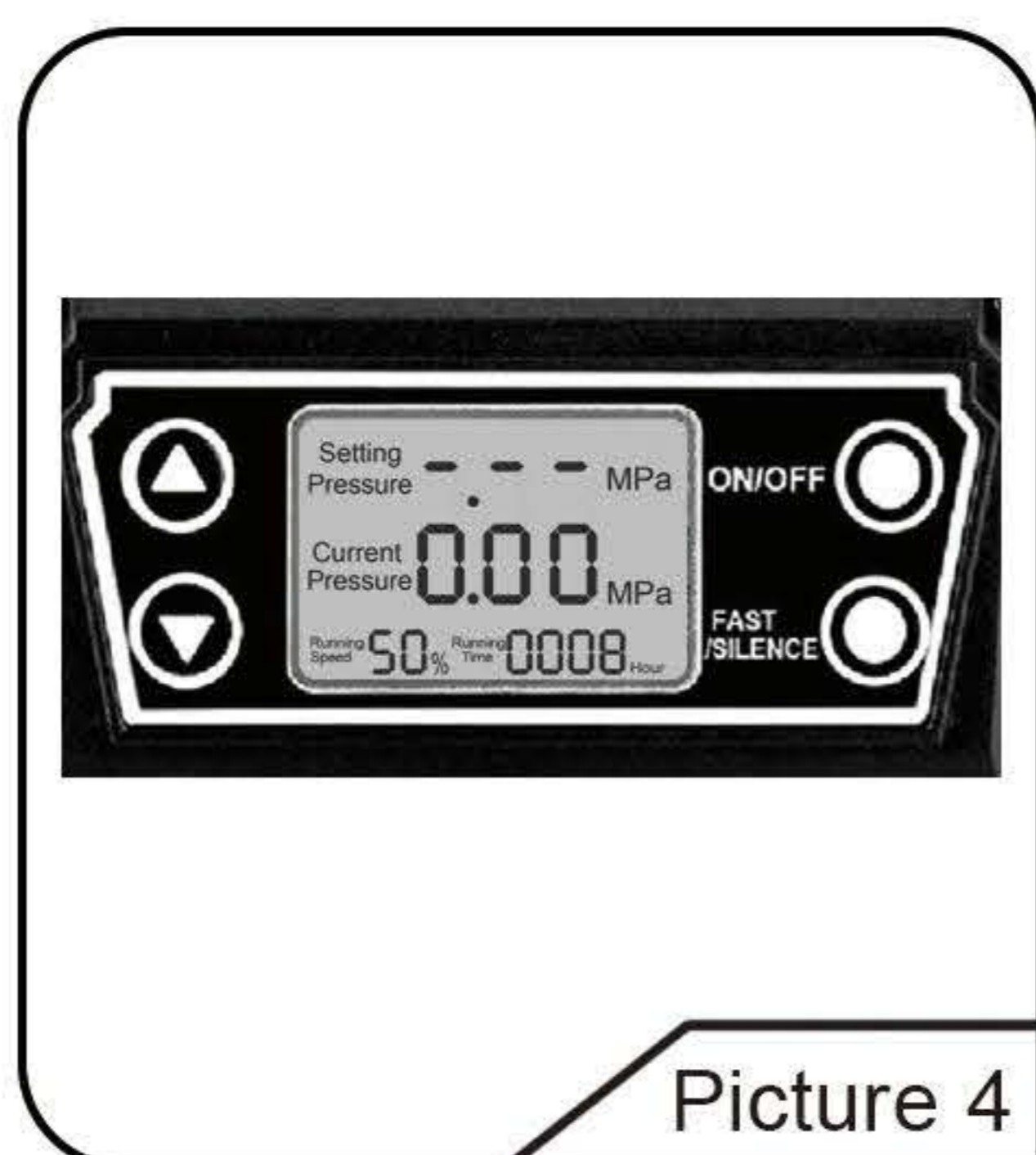
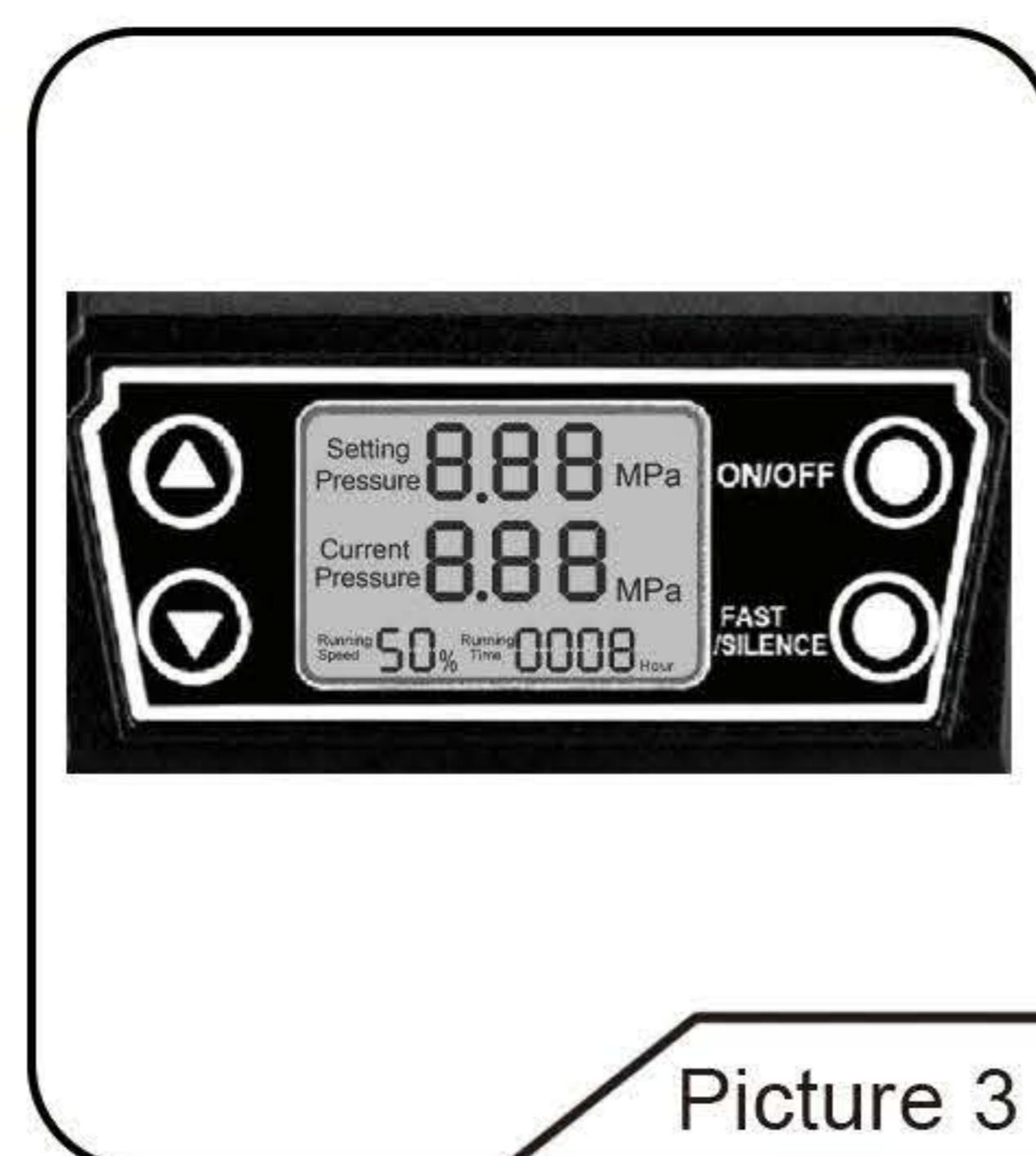
This machine is AC/DC double use air compressor, the battery wrap and AC power supply all can supply power for machine, can shift the power supply through double open switch, when double open switch at "0" position means cut off power supply, when press down the "I" means use the battery wrap supply power, when press down "II" means supply power for machine through AC power supply supply .

The battery wrap and AC power are separated independent power supply, not charging the battery wrap when use AC power supply, the battery wrap need use charger independent charging.



Operating manual of compressor liquid crystal plate

After plug the power supply, the liquid crystal screen of operating panel will lighting, the machine will has 5s system measure time, the liquid crystal screen indicate effect (shown as picture 3). When the liquid crystal set pressure indicate "----" indicate the effect means machine enter into power on but close machine status, can operate the operate panel after enter into close machine status. (Shown as picture 4)



Operating manual of compressor liquid crystal



Press on operating panel: "ON/OFF" key start machine, can increase set pressure through press the "▲" key on the operating panel after start machine, each one time press increase 0.05MPa, when set pressure smaller or equal 0.3MPa, each one time press increase 0.02MPa. Reduce the set pressure through press the "▼" key on the operating panel. The machine will automatically stop after the air supply pressure value achieve set pressure value, the machine will automatically start when the air supply pressure value lower than 10% of set pressure value after air ventilate, short time not use or occur failure can press the "ON/OFF" key on the operating panel to close the machine.

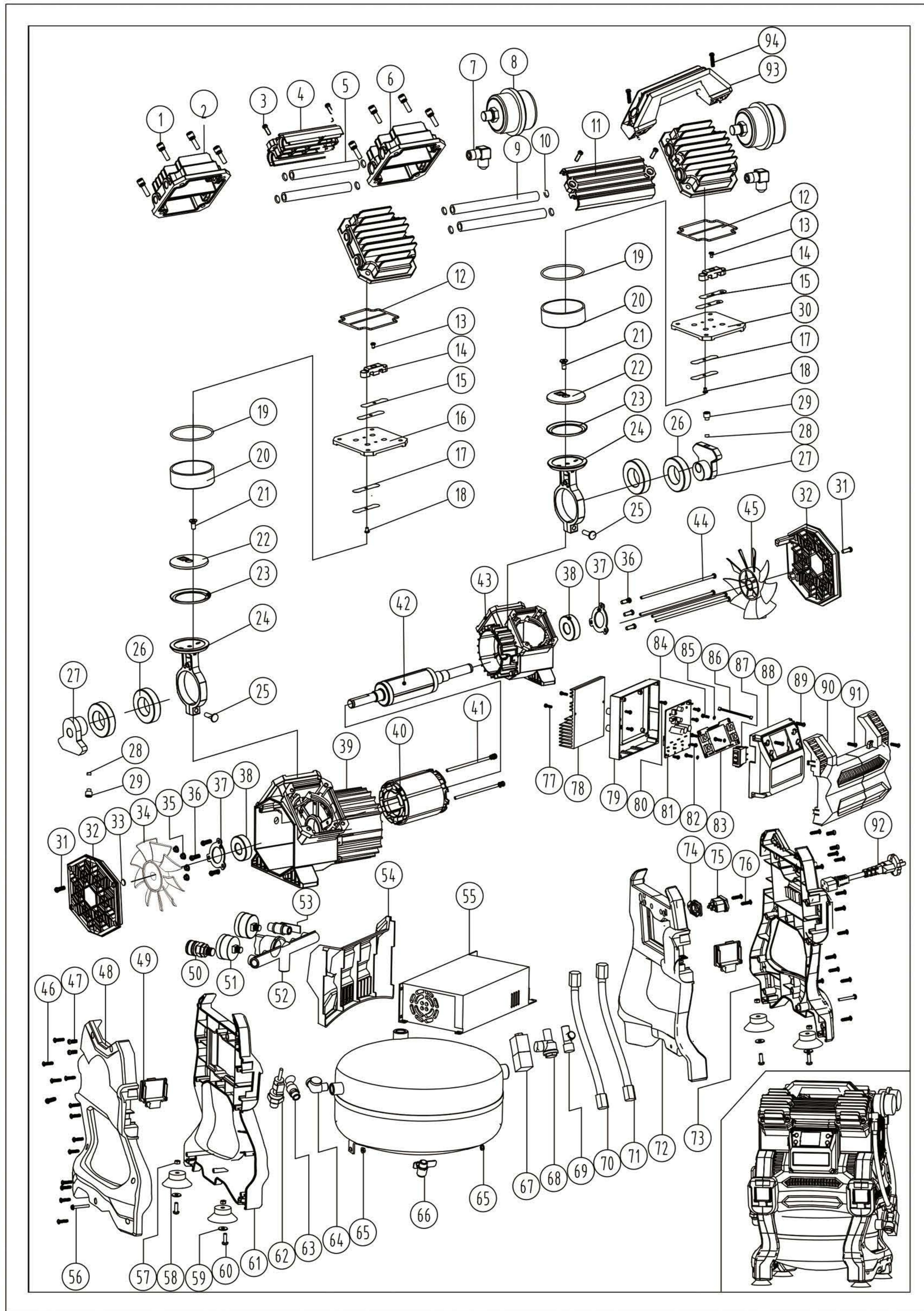
The liquid crystal screen indicate effect (shown as picture 3). This machine has mute and high speed two modes, can press "Mute/high speed" button circle shifting mode.



This machine has mute and high speed modes, can press "Mute/high speed" button circle shifting mode, high speed mode fast supply air, mute mode small noise.

Maintenance (Should cut off the power supply and completely exhaust air pressure before process all maintenance works, otherwise, it will caused dangerous)

1. Please keep machine clean, should fix time process washing maintenance for machine.
2. Completely exhaust the dirty water in the gas storage vessel, at least one time per week, the pressure in the gas storage vessel when exhaust dirt water should smaller than 0.1MPa.
3. Frequently check whether safety valve sensitivity, safety valve able to air ventilate easily.
4. Each use 100 hours, please disassemble the filter core of this muffle to clean or renewal, renewal skin bowl each use 500 hours, the liquid crystal screen will indicate running time.



No.	Serial Code	Name & Specs.	Qty	No.	Serial Code	Name & Specs.	Qty
1	1330033	Hexagon socket head screw M6x30 triple	16	53	2190146	The exhaust valve	1
2	2500488	Top cover (left)	2	54	4101163	Power bracket cover (back) (new)	1
3	1310040	Cross recessed pan head screw M4x14 triple coupling	4	55	3900530	Power convertor	1
4	4100951	The handle is short	1	56	1310095	Cross pan head screw M4x30 triple coupling	2
5	2500486	Aluminium windpipes are shorter - 12.6X103.5	2	57	1600034	Hex nut M5 opposite side 8	4
6	2500489	Top cover (right)	2	58	4200164	Horn shock absorber foot	4
7	2190263	Right Angle joint (copper)	2	59	1400066	Gasket $\Phi 6 * \Phi 14 * 1$	4
8	2190149	Air Filter	2	60	1310474	Cross recessed pan head screw M5x16	4
9	2500487	The length of the aluminium pipe is $\Phi 12.6X133.5$	2	61		Gas tank support left (inside)	1
10	4200163	O-ring - 10X - 2	8	62	3900193	Pressure sensor	1
11	4100950	The handle is long	1	63	2190308	Perforated relief valve G1/4	1
12	4200171	Square pad (special for DC900 air compressor)	4	64	2190289	Three-way elbow	1
13	1310063	Cross recessed large half round head screw M4*10 triple	4	65	1600026	Hexagon nut M4 with flange (opposite side 7)	2
14	2500455	Valve plate press block	4	66	2190184	Drainage ball valve	1
15	2200314	Valve Slice 14 x50x0.1	4	67		Solenoid valve die cast 12V	1
16	2500454	Center cover (left)	2	68	2190269	Check valve (copper)	1
17	2200316	Small square gasket 10x12x0.6	4	69	2190241	Three-way connector	1
18	1310084	Cross recessed large semicircle head screw M4x8 (cap $\Phi 8$)	4	70		Air compressor hose 265	1
19	4200162	O-ring - 63X - 3	4	71	2190335	Air compressor hose 235	1
20	2130045	Cylinder - 69X - 63.7x 24.5	4	72		Gas tank bracket right (inside)	1
21		Hexagon socket countersunk head screws M8X20	4	73		Air tank support right (outside)	1
22	2500456	Cup press block	4	74	4900015	Ac-04 three-pin socket waterproof cap	1
23		Leather bowl 48X 68x0.8 (made in China)	4	75	3400093	Conversion plug (10A 250V)	1
24	2500457	Deflection of the piston	4	76		Cross recessed countersunk head tapping screws M4x16	2
25	1330047	Hexagon socket head screws M5x20	4	77	1310109	Cross recessed pan head screw M3x12 (triple coupling)	2
26	1100141	Deep groove ball bearings 6006RS/SYBS	4	78		Radiator block (new)	1
27	2190170	The crank length	2	79		Main-board aluminum box	1
28	2190332	Locking block	2	80	1310085	Cross pan head screw M4x20	4
29	1340007	Hexagon socket set screws M8X10	2	81		Main-board	1
30	2500628	Center cover (right)	2	82	1310065	Cross recessed pan head screw M3x10 (triple coupling)	4
31	1310080	Cross recessed pan head screw M4x14	4	83		LCD circuit board	1
32	4100902	The fan leaf cover	2	84		Cross recessed pan head tapping screws ST2.5x8-C	1
33	1500015	The shaft has a retaining ring of $\Phi 14$	2	85	3300210	Red vulcanized fiber mat	4
34	4100903	The Fan a.	1	86		Display cable	1
35	1600029	Hexagon flange nut M5	4	87	3400092	Lithium double open switch (30A)	1
36	1310115	Cross recessed pan head screw M5*14 coupling	3	88		Main-board cover	1
37	2500928	Air compressor bearing gland $\Phi 43 * \Phi 28 * 2$	2	89		Cross recessed pan head screw M4x16	4
38	1100142	Deep groove ball bearing 6203RS/CW	2	90	4101162	Power bracket cover (front) new	1
39		Case 1	1	91		Cross recessed pan head screw M4x16	4
40		The stator	1	92		Cable (tail plug)	1
41	1310073	Cross pan head screw M5x100 triple	2	93		The handle	1
42		The rotor	1	94		Cross recessed pan head screw M6x30 (triple coupling)	1
43		Case 2	1				
44	1350043	External hexagon bolt M5x145	4				
45	4100904	The fan leaf B	1				
46	1200005	Cross recessed pan head tapping screws ST4x16-F	28				
47	1310118	Cross recessed pan head screw M5x12	4				
48		Gas tank support left (outside)	1				
49	2200440	MAKITA battery PIN	2				
50		Coupling connection (outside g1/4)	1				
51	2090188	Pressure gauge	2				
52	2190339	Pressure regulating valve (new 990-10)	1				